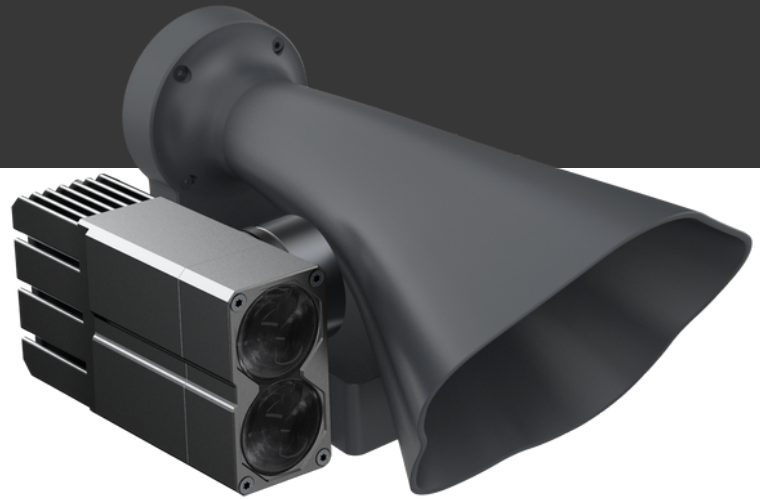


SEARCHLIGHT & BROADCASTING SYSTEM LP12



TECHNICAL PARAMETERS

Model

LP12

Electrical interface

DJI PSDK

Weight

288g(without quick-mount fixture);
300g(with quick-mount fixture)

Dimensions

156*109*84mm

Searchlight power

Regular mode:30W
Ultra bright mode&Flashing
mode:40W

Speaker power

15W

Power supply voltage

24V

Luminous flux

2122lm±3%

Searchlight FOV

13°

Illumination distance

150m, 130m, 100m, 50m

Spot diameter

34m, 29.6m, 22.8m, 11.4m

Illuminated area

917m², 688m², 407m², 102m²

Central illuminance

107Lux, 2.5Lux, 6.3Lux, 25Lux

Gimbal movement range

Pitch -120°~+45°

Maximum sound pressure

122dB

Effective broadcasting/m

200m@76db; 350m@69db

Broadcasting method

Live broadcasting, Upload the recording files, Play audio file, Text To Speech (supports multi-language), Background sound

Audio formats

mp3/wav/m4a/flac/aac

App support

DJI Pilot / DJI Pilot 2

Operating temperature

-20°C~+50°C

ONE DEVICES TWO FUNCTIONS SMALL AND POWERFUL

- Broadcasting and lighting two-in-one design
- Weigh only 288g
- Lightweight
- long duration of flight

EXCELLENT SOUND AND LIGHT EFFECTS

- LRAD Sound Technology & Optical Imaging
- 122dB Ultra-high sound pressure
- Effective illumination distance up to 100m
- Effective sound distance up to 200m

GRIDX
metering and control