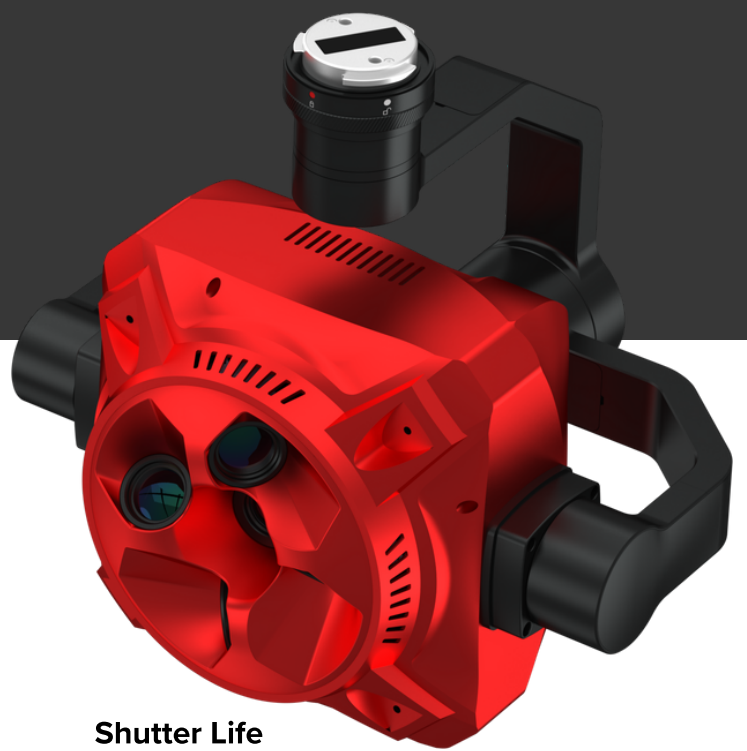


# SHARE 203S PRO



## OVERALL

### Name

SHARE 203S PRO

### Size

130\*130\*99.5mm;

182.5\*203\*196.6mm(with gimbal)

### Weight

830g; 1280g(with gimbal)

### IP Rate

IP5X

### Compatible Platform

DJI M300 RTK、 Other multi-rotor and fixed-wing UAVs

### Power Supply

External Power supply with DC 12-50V

### Interface

DJI Skyport interface & General interface

### Effective Pixels

45 million (total 225 million pixels)

### Sensor Size

Sensor size: 36×24mm(Full-frame);

Pixel size: 4.4μm

### Image Resolution

8192×5460 px

## CAMERA

### Acquired Data

Images including GPS and camera parameter / POS file

### Focal length

Fixed focus Side view:56mm Top-down view: 40mm

### Tilt Angle

45 degree

### ISO Option

50-200,50-400,50-640,50-800,50-1000,50-1600

### Shutter Speed

1/500,1/640,1/800,1/1000,1/1250

### Shutter Life

S-GS Global Shutter; Shutter warranty life 500,000 times

### Aperture Size

Fix to F5.6

### Storage

Removable storage module with capacity of 1280GB\*2

### Image Transmission

Dynamic bitstream HD five-lens image transmission

### Exposure Interval

≥0.9s

### Parameter Adjustment

Support adjusting ISO, white balance ,color mode and shutter speed through DJI Pilot

### Data Copying Speed

600MB/s

### Operating Mode

Trigger by Flight Controller, Isometric photography, and Isochronous photography

### Installation

DJI Skyport & Common interface

## GIMBAL

**Stabilization System** 3 axis (pitching, rolling or yawing )

**Installation Method** Integrated quick release interface

**Movement Range** Pitching: -120°to +45°; Rolling: ±25°; Yawing: ±160°

**GRIDX**  
metering and control