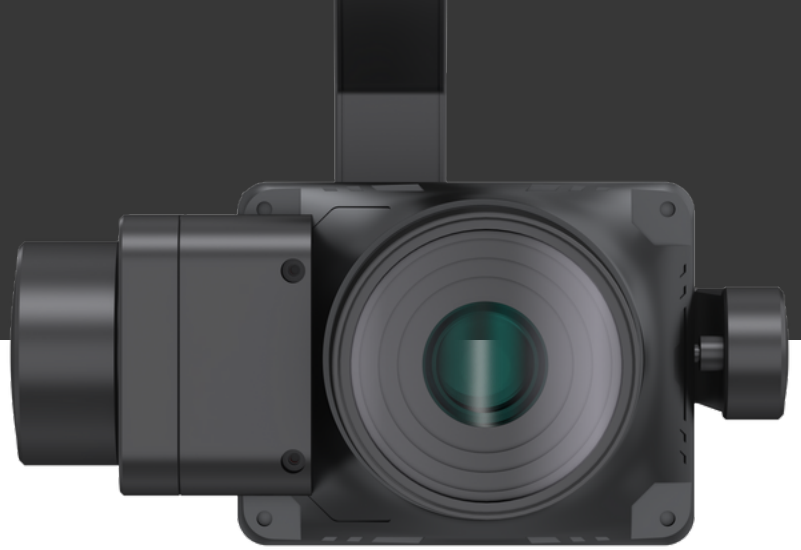


SHARE 4500X



OVERALL

Name

SHARE 4500X

Size

75.5*60*107.5mm(without gimbal) ;
128.5*181.5*153.3mm(with gimbal)

NW.

≈280g(without gimbal) ≈640g(with
gimbal)

IP rate

IP53

Compatible Platform

DJI M300 , Other Multi-rotor and fixed-
wing UAVs

Working Temperature

-20°C ~ 50°C

Storage Temperature

-20°C ~ 60°C

Power Supply

External Power supply with DC 12-50V

Interface

Gimbal interface & General interface

CAMERA

Effective Pixels

45Million pixels

Sensor Size

Sensor size: 36*24mm(Full format);
Pixel size: 4.4μm;

Image Resolution

(3:2) 8192 x 5456

ISO Range

AUTO: 50-200/50-400/50-640/50-
800/50-1000/50-1600;
Fixed ISO: 100、200、400、640、
800、1000、1600

Shutter Speed

1/1250,1/1000,1/800,1/640,1/500

Storage Capacity

512GB

Exposure Interval

≥0.9s

Parameter Adjustment

DJI Pilot

Data Storage

Integrated Data Storage Module

Operating Mode

Flight Controller Trigger /Isometric
Trigger / isochronous Trigger

Image Transmission

Dynamic bitstream HD image
transmission

LENS

Focal length Standard: 40mm;

Customizable: 56mm

Aperture Size Fixed : F5.6

Shooting Distance ≥20m

LENS

Video Formats MP4

Video Size [4K(3840×2160)],

Frame Rate: 30fps

GIMBAL

Stabilization 3-axis (Pitch Yaw Roll)

Installation Method Quick release gimbal
interface

Mechanical Range Pitching: -130° to +40°

Yawing: -320° to +320° Rolling: ±55

GRIDX
metering and control